

Deploying WiFi Voice

A Grandstream VideoTalk
November 2018

About Grandstream

- **Founded in 2002**
- **Over 600 employees**
- **Product Portfolio contains over 40 products: *Business Conferencing, IP Phones, Gateways and ATAs, Networking Devices, Surveillance and Facility Access Systems, and Award Winning IP PBXs***
- **Primarily serving small-to-medium size businesses (SMBs) and consumer markets**

US



Boston - Headquarters
Los Angeles, CA
Dallas, TX

China



Hangzhou, Shenzhen
Hong Kong - Warehouse

Morocco



Casablanca - Support Center, EMEA

Venezuela



Venezuela- Support Center, LATAM

Netherlands



Moerdijk - Warehouse

Malaysia



Kuala Lumpur – Support Center, APAC



Award-Winning History

Deloitte.
Technology Fast50





Why WiFi Voice and Video



- 31 billion devices are expected to be connected to the IoT over wireless channels by the end of 2018

IHS Markit Report

- 71% of all mobile communications occur over a WiFi connection

The Economist Intelligence Unit

- 60% of employees believe that mobile technology boosts their productivity

Wi-Fi Alliance Fact Sheet



Advantages of WiFi Voice and Video



- Utilizing light-infrastructure deployments with wireless networks
- Seamless office mobility to empower collaboration
- Integrated solution for superior connection quality
- Streamlined installation and management
- Industry trend of hybrid office structure



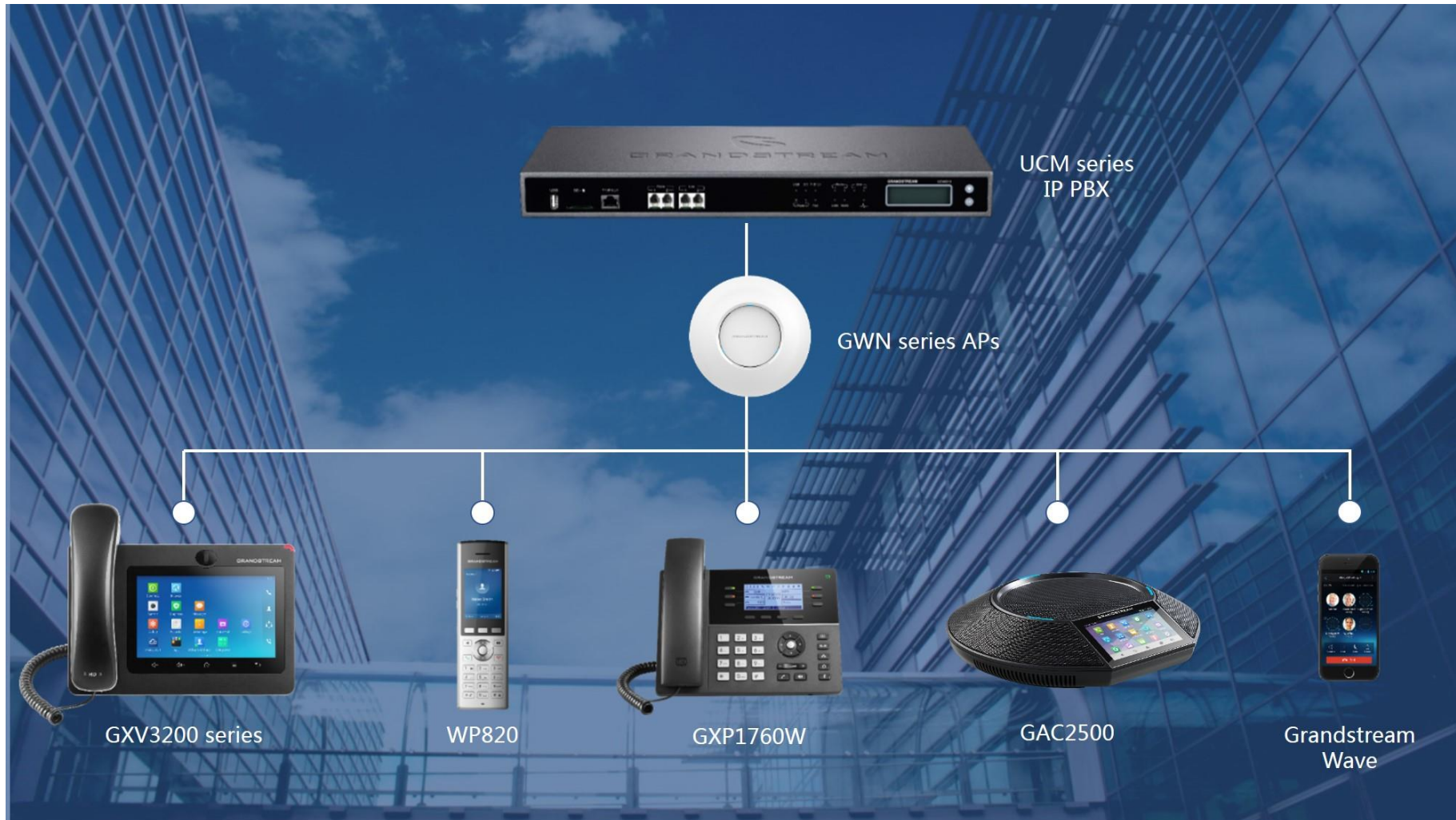
Grandstream WiFi Voice Deployment



- Connect onsite or hosted IP PBX through a WLAN
- WiFi access points provide the foundation
- Multiple endpoint to choose from to create a complete deployment
- Softphone GS Wave application for work-phones



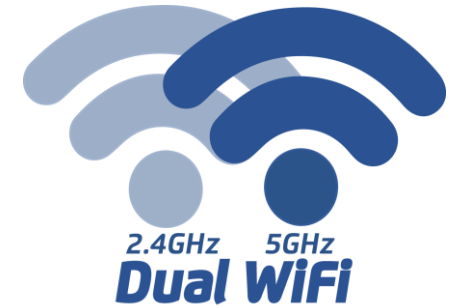
Grandstream WiFi Voice Deployment





GWN Series of WiFi Access Points

- MU-MIMO design allows internal antennas to send and receive data at the same time
- Embedded controller and robust web UI
- Industry-leading security suite
- Powerful data transfer and device support
- 2.4GHz and 5GHz dual WiFi design





Networking Solutions

Wifi Access Points



Grandstream's powerful WiFi Access Points offer high performance networking, industry-leading coverage range, fast provisioning and management thanks to a built-in controller, outstanding network throughput and support for a large number of clients per AP.

GWN.Cloud is an enterprise-grade management platform for Grandstream access points. Manage multiple network deployment from one intuitive and powerful web portal.



GWN7610

Enterprise 802.11 ac WiFi Access Point

- Supports more than 250+ WiFi client devices.
- 1.75Gbps wireless throughput and 2x Gigabit wireline ports.
- 175-Meter coverage range for superior device mobility.
- Dual-band 3x3:3 MIMO technology
- Advanced Wi-Fi security features, including WEP, WPA/WPA2-PSK, WPA/WPA2-Enterprise
- Offers simultaneous dual band WiFi signals.
- Embedded controller for auto-discovery, auto-provision, and management of up to 50 GWN7610s.





GWN7600

Mid-Tier 802.11 ac Wave-2 WiFi Access Point



- Supports more than 450+ WiFi client devices.
- 1.27Gbps wireless throughput and 2x Gigabit wireline ports
- 165-Meter coverage range for superior device mobility
- Dual-band 2x2:2 MIMO technology
- Advanced Wi-Fi security features, including WEP, WPA/WPA2-PSK, WPA/WPA2-Enterprise
- Offers simultaneous dual band Wi-Fi signals
- Embedded controller for auto-discovery, auto-provision, and management of up to 30 GWN APs



GWN7600LR

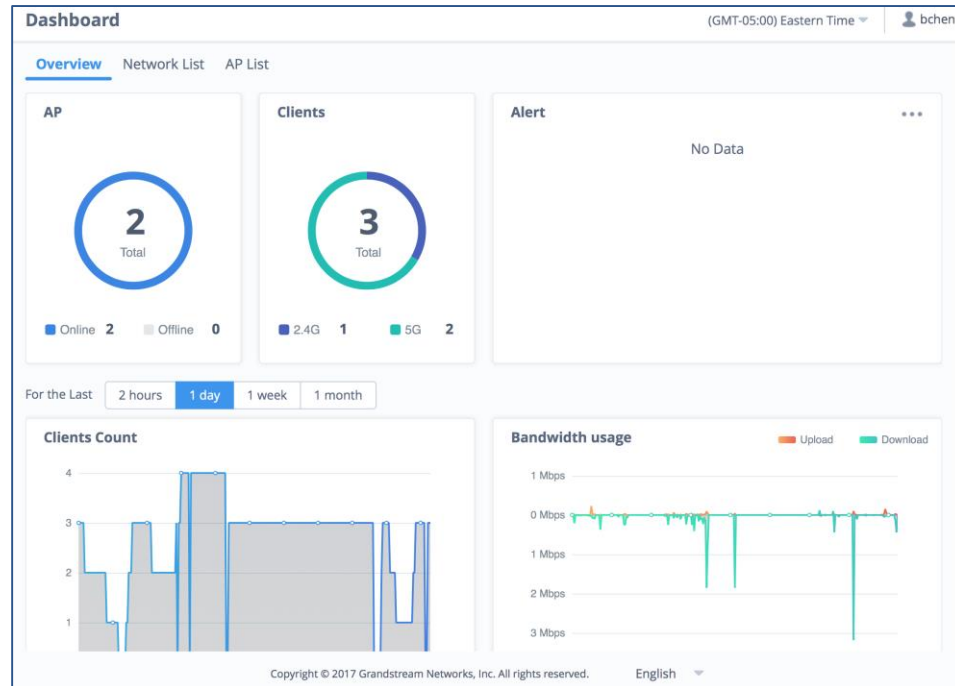
Outdoor Long-range 802.11ac Access Point



- Supports more than 450+ WiFi client devices
- 1.27 Gbps wireless throughput and 2x Gigabit wireline ports
- 300-Meter coverage range for superior device mobility
- Dual-band 2X2:2 MIMO technology
- Advanced Wi-Fi security features, including WEP, WPA/WPA2-PSK, WPA/WPA2-Enterprise
- Offers simultaneous dual band Wi-Fi signals
- Embedded controller for auto-discovery, auto-provision, and management of up to 30 GWN APs



NEW



GWN.Cloud

Cloud Controller for the GWN Series Access Points

- Manage networks from anywhere using a web browser or GWN.Cloud app for iOS & Android
- Works with all Grandstream access points
- Provides real-time AP and client monitoring
- Integrated statistics, reports and alerts
- Streamlined network configuration process in an easy to use web UI
- Available to use at: www.gwn.cloud/register



WiFi Enabled End-Points

- Enterprise mobility through the WP820 portable WiFi phone
- Desktop WiFi solutions
 - Voice and Video
- Conferencing solutions supporting large boardrooms to small huddlerooms



NEW



WP820

Enterprise Portable WiFi Phone

Portable WiFi IP phone with dual-band WiFi support and a suite of enterprise-grade communication features.

- HD Voice and dual MIC design with AEC and noise shield technology
- 2 SIP Accounts, 2 Lines
- Built in accelerometer, panic button, push-to-talk
- 7.5 hour talk time, 150 hour standby time

NEW

IT SPA
AWARDS 2018



GXP1760W

Mid-Range IP Phone With WiFi

Integrated dual-band WiFi-enabled desktop IP phone. Ideal for productivity focused workstations for various call volumes.

- Equipped with enterprise features for call efficiency and productivity
- Digital BLF Keys, 24 programmable keys
- 6 lines, 3 SIP accounts
- 5-way conferencing
- Integrated PoE, USB Port, and EHS support



GXV3240

Android Video IP Phone



All-in-one communication solution that enhances the efficiency and desktop experience of any user.

- 4.3" touch-screen
- 6 lines, 6-way audio conference and no-cost 3-way video conferencing
- 3rd party Android™ applications include Microsoft Lync, Skype, Twitter, Facebook
- Wi-Fi PoE, Bluetooth, USB, SD, mini HDMI, EHS
- Compatible with the GXP2200EXT extension module

NEW



GXV3370

Android Video IP Phone

A multimedia solution for executive desktops and enterprise users. Complete voice, video, and productivity solution to maximize efficiency.

- Runs on Android 7.0
- 7" touch screen
- 16 lines, 7-way audio conference and no cost 3-way video conference
- 3rd party Android™ applications include Microsoft Lync, Skype, Twitter, Facebook
- WiFi, PoE, Bluetooth, USB, SD, mini HDMI, EHS
- 4-core processor and 2 GB RAM and 8 GB eMMC Flash for maximum performance



GAC2500

Android IP Conference Phone

An ideal conference solution that delivers a modern design paired with HD audio and a suite of productivity-focused features.

- 4.3" capacitive touch screen LCD
- 6 lines with built-in 7-way conference bridge
- Dual Gigabit networks ports & built-in PoE
- Integrated Bluetooth, USB and Wi-Fi





GVC3200

Video Conferencing System

A video conferencing system for an organization looking to use powerful meeting and collaboration features.

- Embedded MCU with up to 9-way video conferencing and remote screen sharing
- Advanced remotely controllable PTZ camera with wide angle lens and 12x optical zoom
- Gigabit network port, Wi-Fi, Bluetooth and 3 HDMI output ports for 3-screen view and screen sharing
- Includes Bluetooth based remote control, GAC2500 and mounting kit





GVC3210

Video Conferencing Endpoint

An innovative video conferencing endpoint ideal for small to medium businesses who need an easy-to-use yet productive video conferencing device.

- Sharp HD video resolutions up to 4k Ultra HD
- Integrated dual-band WiFi and Bluetooth
- Built-in 4-MIC array with Noise Shield Technology, and support for external audio equipment
- Advanced camera with 16M pixel CMOS sensor, 90 FOV wide angle lens and ePTZ
- Support for Miracast wireless content sharing
- 1x HDMI in, 2x HDMI out, and 2x USB, 1 Micro SD





WiFi Voice Deployment Scenarios

- Healthcare Centers
- Education and universities
- Logistics, warehouse, and cargo facilities
- Event facilities and companies
- Outdoor recreation facilities
- Retail and Commercial Stores
- Modern offices and enterprises





Healthcare Centers



WiFi mobility meets high-productivity supporting features

- GWN7610 or GWN7600 creates immersive WiFi network
- WP820 for doctors, nurses, and other mobile staff
 - Two lines, push to talk, panic button
- GXP1760W for reception, nurse stations, and administration
- GXV3370 for executives and chief of medicine
- GAC2500 for conference rooms



Education and Universities

Comprehensive WiFi solution for both staff and students, affordable infrastructure

- GWN7600 supports lecture halls, dormitories, and areas of high user density
- GWN7600LR for outdoor coverage
- WP820 supports facility, security, and janitorial staff
- GXP1760W for admin and staff offices
- GVC3200 in classrooms for group collaboration
- GVC3210 for productivity based huddle rooms





Logistics, Warehouse, and Cargo Facilities



Support large open spaces and time-sensitive efficiency

- GWN7600LR provides framework for the network
- WP820 primary device for bulk of staff
- GVC3210 for multi-site collaboration



Event Facilities and Companies

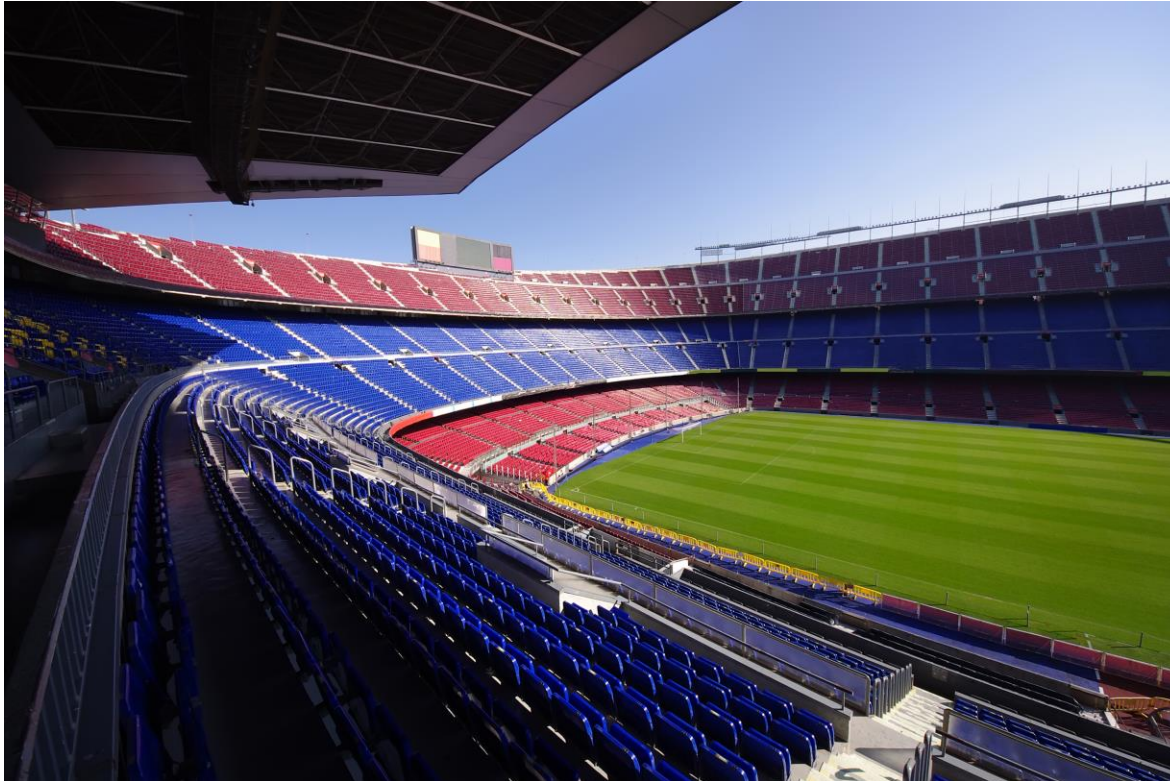
Simple and powerful mobile WiFi infrastructure

- GWN7600LR for outdoor deployments and massive event halls
- WP820 support mobile event staff





Outdoor Recreation Facilities



Network that combines an outdoor and indoor infrastructure

- GWN7600LR and GWN7610 for the respective network
- GXV3240 for maximum productivity of internal office staff
- GVC3200 and GAC2500 provides a comprehensive meeting room solution
- WP820 provided to each staff member when they need to traverse facility



Retail and Commercial Stores

Enhance staff's customer service capabilities while providing public network to customers

- GWN7600 supports maximum users, staff/public network
- WP820 provides staff mobility while maximizing customer service
- GXP1760W for any needed desktop endpoints





The Modern Office

Hybrid office design requires a mobile and wireless structure

- Laptops and mobile productivity devices becoming a status-quo
- Collaboration areas require freedom of movement
- Productivity areas require effective desktop endpoints



An abstract graphic consisting of several overlapping, curved, blue shapes that resemble stylized petals or leaves. The shapes are rendered with a gradient from a darker blue to a lighter blue, giving them a three-dimensional appearance. They are arranged in a circular pattern, with some shapes pointing outwards and others pointing inwards.

THANK YOU